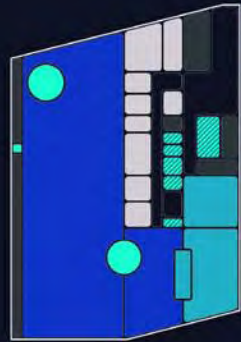
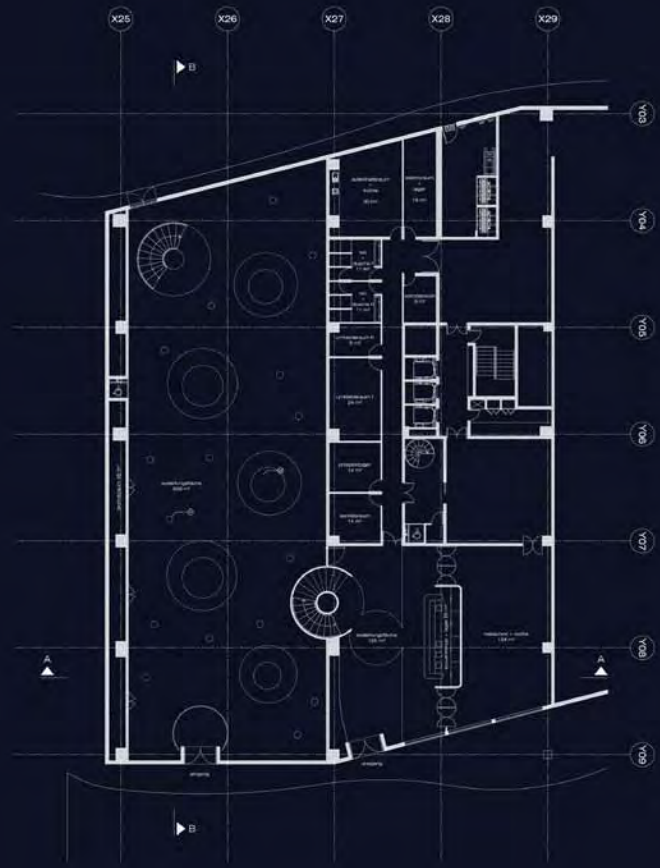


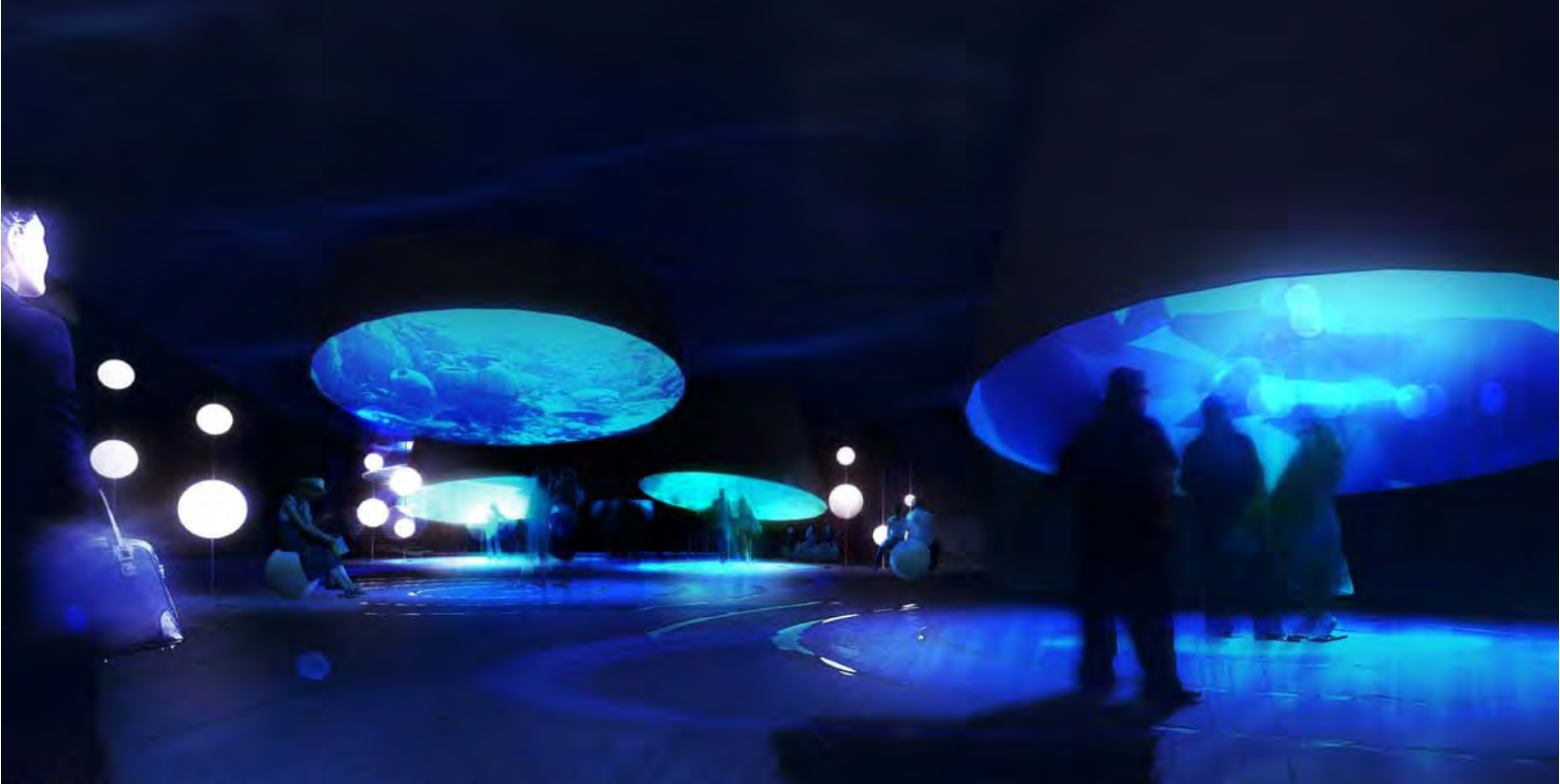
südfassade



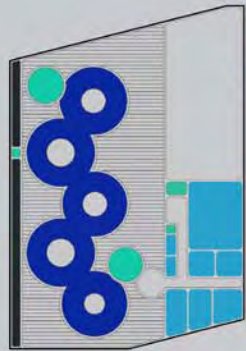
raumprogramm - erdgeschoss



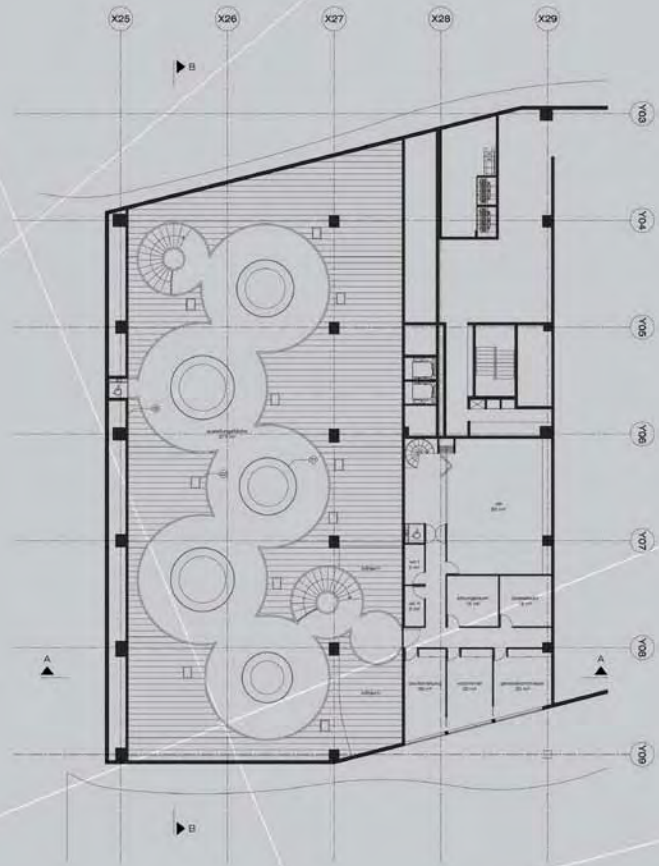
erdgeschoss 1/200  
01 "wasserläsen" - led bildschirm  
02 "inermischer konus natur" - led projektorfläche



blick vom eingang auf die ausstellung



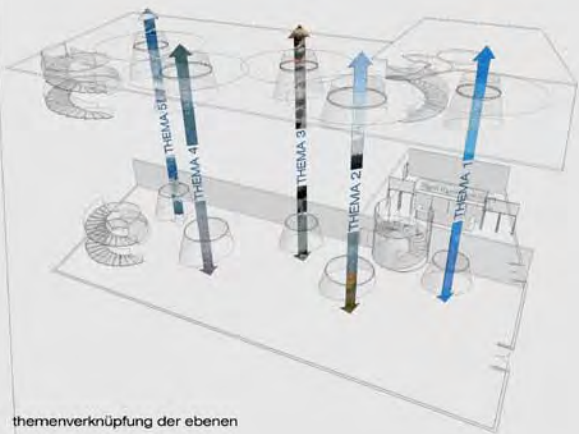
raumprogramm - zwischenebene



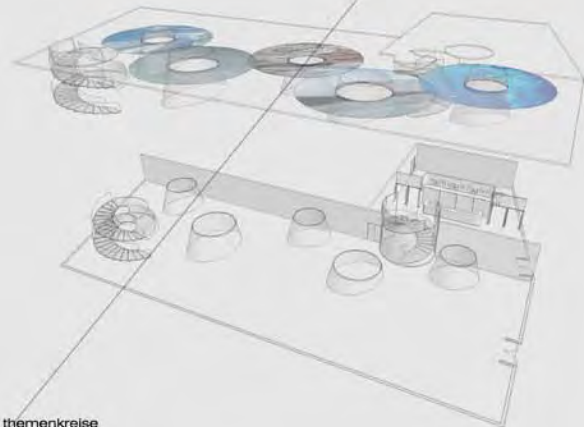
zwischenebene  
01 "transfunktionaler forum kultur" - exponate  
02 "wissensoberfläche" - exponate  
03 spiegelfläche



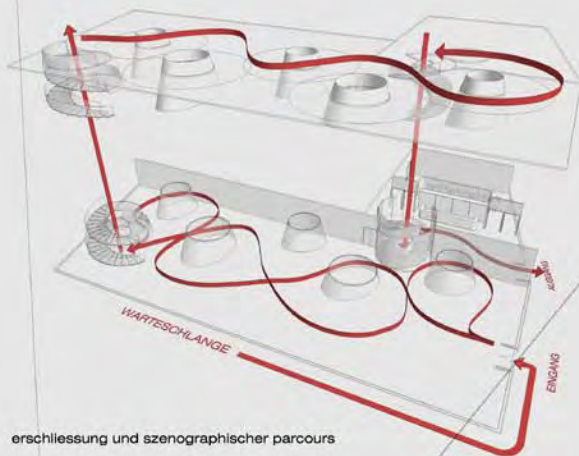
blick auf die ausstellung der zwischenebene



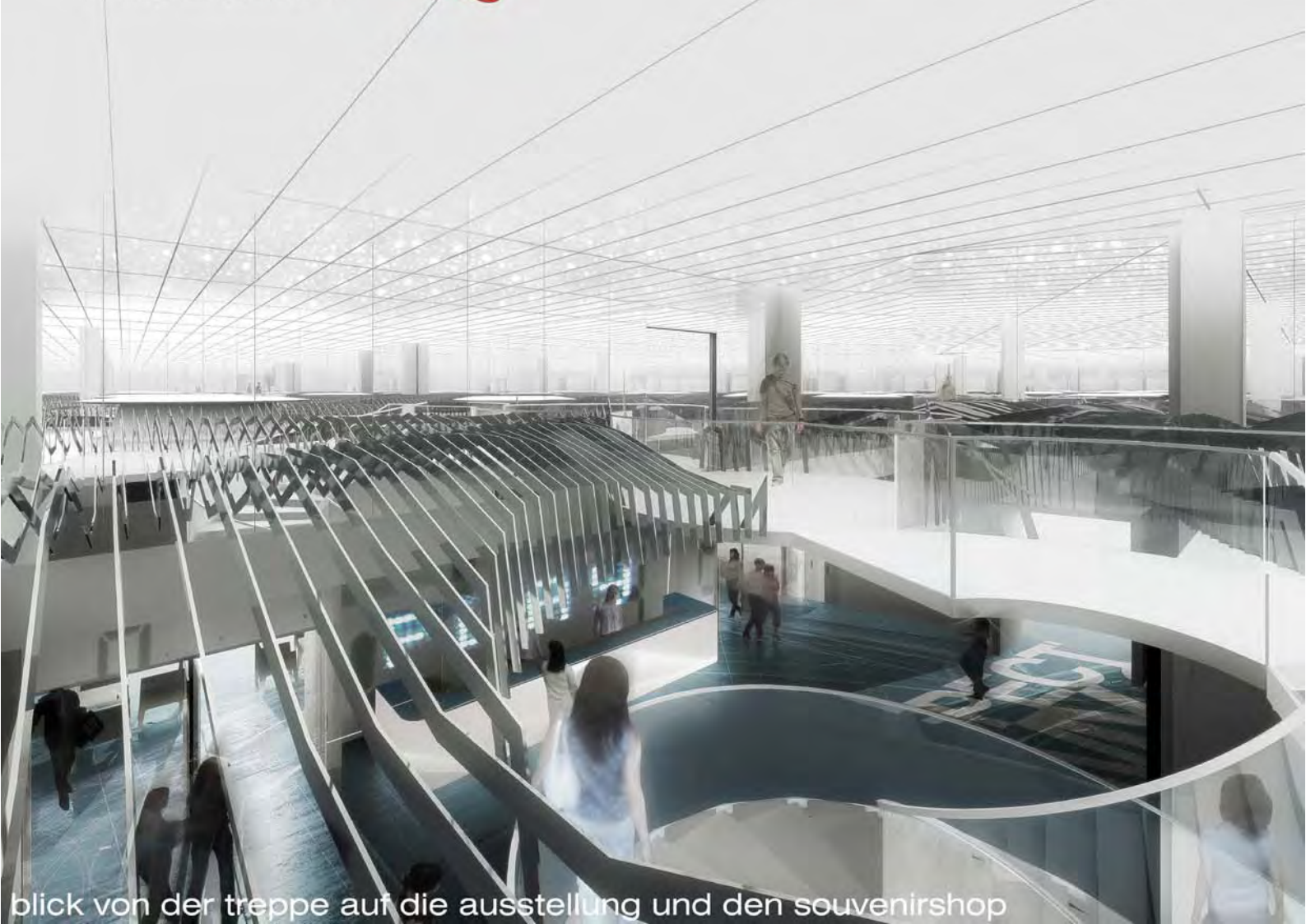
themenverknüpfung der ebenen



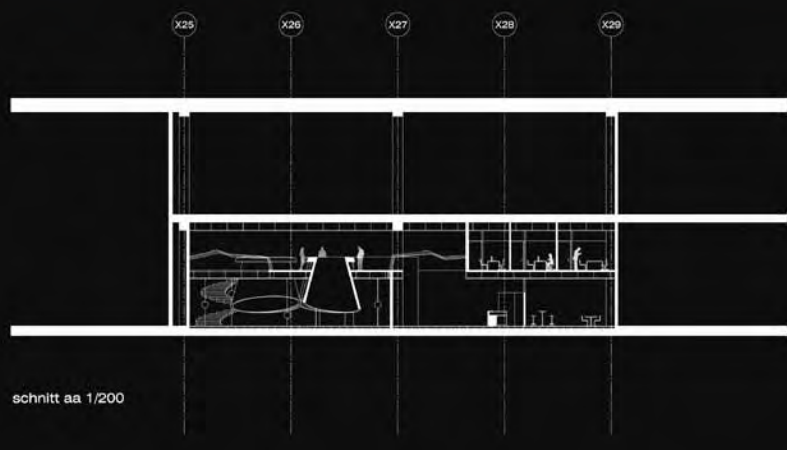
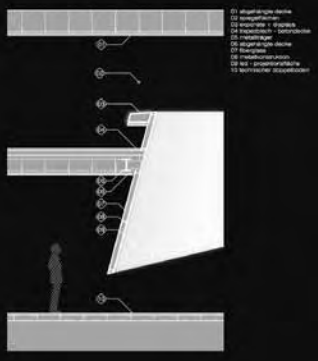
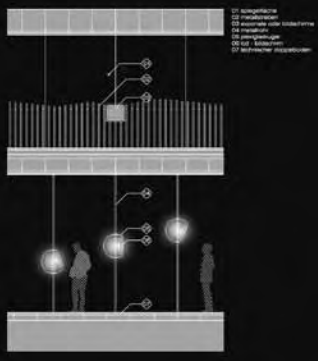
themenkreise



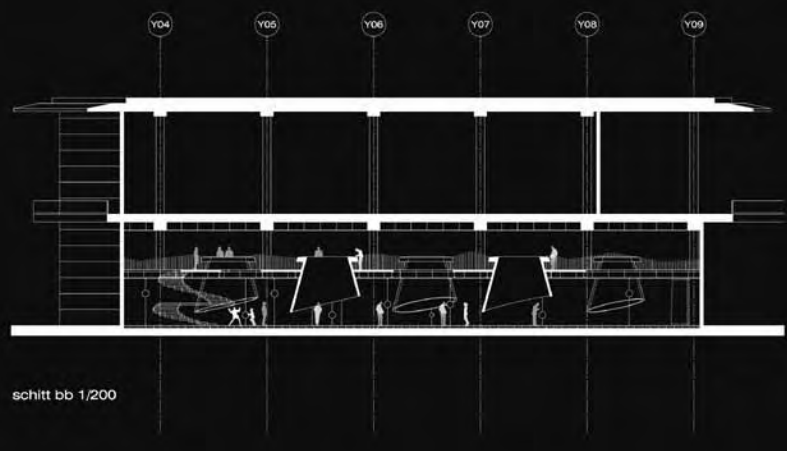
erschließung und szenographischer parcours



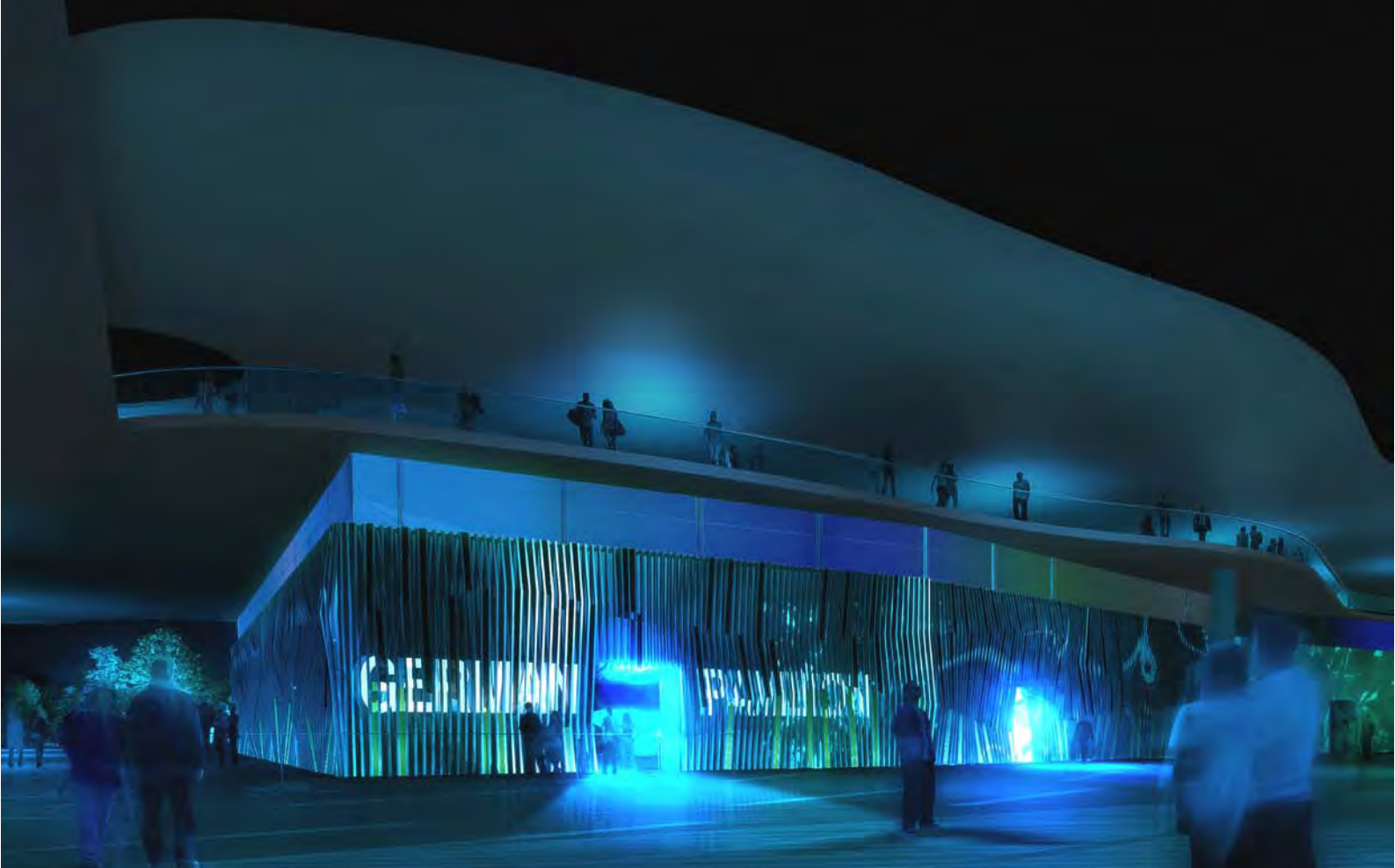
blick von der treppe auf die ausstellung und den souvenirshop



schnitt aa 1/200



schnitt bb 1/200



südfassade